



Absolute Value®

Demand Planning and Replenishment with Absolute Visibility

PRODUCT

Absolute Value is a demand planning and replenishment software solution that helps you manage your largest and most costly asset – your inventory. The software’s dynamic capabilities streamline purchasing workflows, allowing users to focus on business issues rather than manual tasks. And, by tightly combining forecasting and replenishment, the solution ensures your inventory is at the right place at the right time, while improving customer service levels.

EXTEND YOUR ERP

By integrating directly into your system, Absolute Value extends your ERP investment while upgrading your demand planning and replenishment capabilities.

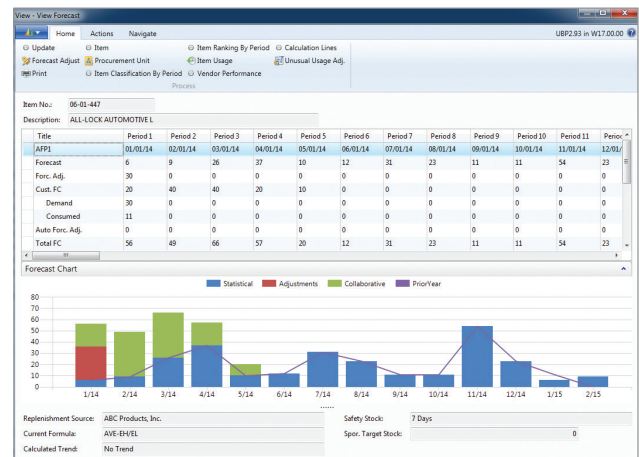
Key data is synchronized between Absolute Value and your ERP system, ensuring planning decisions are made with the most current information available. Formatted to provide an intuitive buyer’s workbench, Absolute Value helps put everything you need to make inventory-related decisions right at your fingertips.

The resulting forecasting and replenishment recommendations, in the form of Purchase Orders and Transfer Orders, are then pushed back to your ERP system for execution.

START WITH THE FORECAST

Any forecasting tool is only as good as the accuracy of its historical data. Absolute Value provides several ways to improve the accuracy of your historical data, including filtering usage, smoothing usage, redirecting usage, cloning, and collaborative input.

Absolute Value assigns a best-fit formula to each item in each warehouse. The result is a forecast extended up to 52 periods (typically 12-15 months).



LONG-LEAD-TIME & SEASONAL ITEMS

Long-Lead-Time Items: Absolute Value factors in the impact of long lead times when making forecasting and replenishment decisions, ensuring you have the items you need, when you need them.

Seasonal Items: The base formulas provided include multiple formulas designed to identify seasonal trends and provide more accurate forecasts. Safety stock is dynamically adjusted for seasonal items, protecting against in-season stock outs and surplus inventory at the end of the season.

COLLABORATE WITH CUSTOMERS & VENDORS

Customer Collaboration: The collaborative tool allows users to import customer-provided forecasts and make them part of the overall forecast. Alternatively, Absolute Value can create a forecast specifically for a customer and export it to Excel, to provide to them for their input.

Vendor Collaboration: This tool creates a collaborative forecast for you to provide to your suppliers. The collaborative forecast shows your anticipated demand over the coming months.

REPLENISHMENT

Buyers have unprecedented visibility into all of the calculations behind the system's recommendations. While Absolute Value uses state-of-the-art algorithms and methodologies, it never takes the "brains" out of the equation. When the system presents buyers with recommendations, they can always apply their own industry or product knowledge to validate or improve the result.

Through the use of dynamic controls, Absolute Value reacts to changes related to inventory, demand, or to the demand plan itself. This allows the system to automatically make adjustments if it detects an over-consumption of the forecast. Having the ability to quickly react, Absolute Value can minimize the chance of a future stock-out by increasing the suggested order quantity.

Suggested Orders are created either automatically or on demand, making a suggestion of the items and quantity to purchase.

VENDOR TARGETS

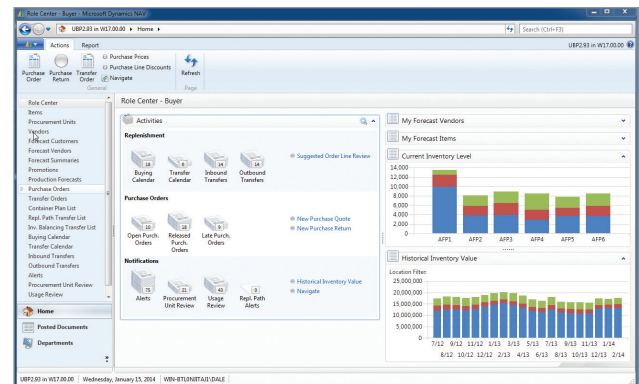
In addition to creating a suggestion for what is needed, Absolute Value also compares the Suggested Order to the vendor's targets. Targets can be set by dollar amount, weight (net and gross), or volume.

MULTI-WAREHOUSE

Multi-warehouse environments often have an inventory need in one warehouse and a surplus in another. With Absolute Value, buyers are presented with the availability of surplus quantities by warehouse, and can choose to transfer all, part, or none of the quantity.

HUB & SPOKE

Absolute Value greatly simplifies multi-warehouse planning by offering the flexibility to set up a replenishment path down to the item level. This allows you to have any warehouse function as a hub for any item or vendor combination. By periodically creating inventory balancing transfer orders, the system can move inventory from the hub to the spoke as needed.



ANALYZE SURPLUS & EXCESS

Absolute Value analyzes every item in every warehouse daily. It then divides the on-hand quantity of each item into Good, Surplus, and Excess categories, and extends these quantities to dollars, which means you can see exactly where your inventory dollars are invested!