

E-SHIP



E-Ship – Shipping Manifest System

E-Ship, built inside Microsoft® Dynamics™ NAV, enables you to reduce cost while increasing both efficiency and accuracy in shipping. All of your shipping data, whether the products are shipped via package carriers or LTL, is housed natively inside NAV for seamlessly simple access to the information you need. Best of breed shipping, right there inside your NAV business system.

Key Benefits:

- Create package-level detail using Pack Line Scanning.
- Ensure shipping accuracy by scanning items while packing and comparing them to the sales order or picking document.
- Capture item weight via Scales Interface.
- Capture serial numbers and lot numbers at packing time.
- Quote freight rates while taking an order.
- Automatically post freight charges to the sales order.
- Automatically create packing lists by package and order.
- Print certified carrier labels, custom labels, and GS1-128 (UCC-128) labels while handling the package.
- Upload Electronic Manifests.
- Automatically send a detailed e-mail with tracking numbers and package contents to the customer at time of shipment.
- Track packages and shipments from within Dynamics NAV.
- Reconcile freight invoices.
- Integrate with EDI and Bill of Lading to generate Advanced Shipment Notices (ASN).

Seamlessly Simple: Built Inside Microsoft Dynamics NAV

Because E-Ship is embedded in Dynamics NAV, the user experience is consistent with other NAV application areas; the learning curve is shortened versus having to learn a different interface. User adoption is rapid; training time minimized. Access to E-Ship data uses the same drill-down methods found throughout NAV. Common data like Customers and Customer Ship-To Addresses are immediately available to E-Ship processes without redundant

data-entry or cumbersome integration. Shipment planning and execution can begin during sales entry without changing to a different bill of lading or manifesting system. E-Ship is seamlessly simple to use, yet surprisingly powerful.

Detailed information in E-Ship can be accessed via the standard drill-down capability found throughout Dynamics NAV. Changes made to a customer's address are made on the system's customer card, where they will be available to all other parts of the system as well. There are no messy interfaces or awkward integrations with a foreign user interface required to ship. E-Ship is seamlessly simple inside NAV and beyond simple to use.

Shipping Accuracy

Pack Line Scanning can drive your shipping accuracy to new levels. E-Ship users will tell you that their accuracy approaches 100%. Not only do they know that they shipped the correct items in multiple packages, but they know which items are in each package and the tracking number of the package. In addition, the weight of each package substantiates that the quantity the customer ordered is actually shipped.

E-Ship uses the Dynamics NAV unit of measure functionality to convert and pack multiple units of measure for a single item. Typically this is utilized when a single item contains different barcodes based on its unit of measure.

When closing an order that is not fully packed as required by the sales order or warehouse shipment, the user is notified that one or more items were not packed. Since the sales order is automatically updated, backordered items are easily exposed to customer service.

An added benefit of package-level detail is the ability to print a summarized packing list for the last package in a group, which shows the contents of each package and the associated tracking number. This information can also be automatically sent via e-mail to the customer with CC and BCC addresses included as needed. This is extremely helpful when drop shipping products to a client's end customer.

Shipping Charges

Charges are automatically posted to the sales order and may be marked-up by a percentage or dollar amount per package as a handling charge.

COD Shipments

COD charges are triggered by the payment terms of the sales order and may be attached to each package or the last package in the shipment.

LTL and Package Carriers

E-Ship offers modules that are selected for the user's specific shipping needs. Supported parcel carriers are FedEx, UPS and USPS. CzarLite, a widely adopted LTL tariff rate file available from SMC3, can be imported to provide immediate LTL carrier selection. Manual LTL rate entry is also supported.

EDI and ASN Integration

Because E-Ship captures package-level detail, there is no need to re-key data or transfer information from system to system to prepare and send the Advanced Shipment Notice (ASN). ASNs can be automatically sent when the sales order is closed, or in the case of LTL shipments, when the Bill of Lading is closed. The process is seamlessly simple.

Multi-Point Shipping Requirements

If your company ships from multiple shipping origins, E-Ship can too! Dynamics NAV supports your wide-area needs with a single ERP solution, while E-Ship allows shipping single sales orders from multiple shipping points, offering separate or consolidated invoicing as desired.

International Shipping

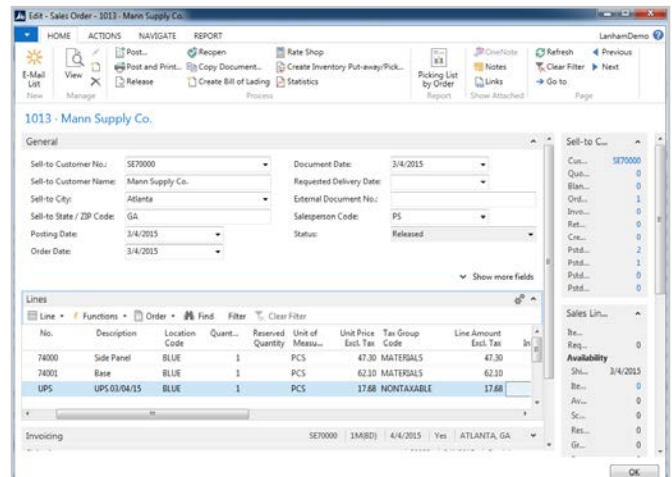
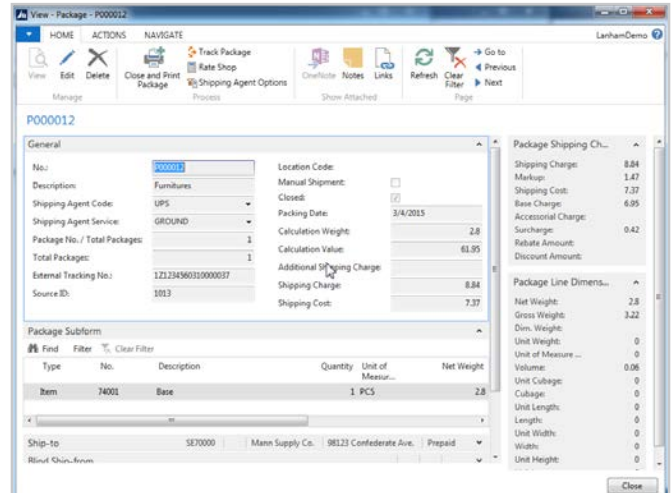
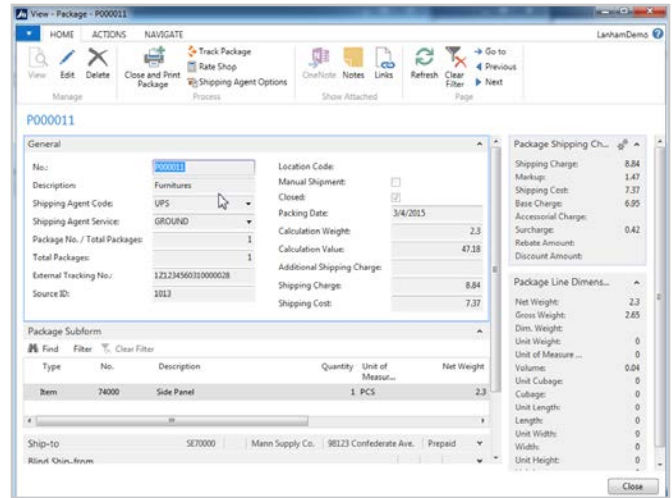
E-Ship supports international shipment needs for shipments originating in the US with:

- Electronic Export Information (EEI), required by The US Census Bureau.
- NAFTA Documents
- Certificate of Origin
- Commercial Invoice

E-Ship also interfaces with the US government's AESDirect website for electronic transmission of the EEI and associated ITN number(s) on international shipments originated in the US.

E-Ship Package Detail

Below you can see a sales order being shipped by UPS in two packages. Notice shipping charges on the sales order.



Available E-Ship Modules

Packing – captures package-level detail using a wedge scanner attached or wirelessly paired to a computer workstation. This unique packing operation allows the user to execute the entire packing and shipping operation with the scanner.

- **Standard Pack** – provides the ability to easily pack many standard packages, such as cases, without scanning and weighing each package. This feature is often used to meet package shipping and labeling retail compliance requirements.
- **Fast Pack** – provides an alternative to the scanning interface by allowing a shipper to choose the item being packed from a list.
- **Export Documentation** – for U.S.-originating shipments, contains Electronic Export Information (EEI), NAFTA, U.S. Certificate of Origin, and commercial invoices. Certificate of Origin export documents can be created independently of packages.

Scales Interface – interfaces with various electronic scales during the packing process. Check www.lanhamassoc.com for current hardware recommendations.

UPS Manifest – uses UPSlink™ functionality for shipments originating in the U.S., to ship domestically and internationally. Includes the latest functionality for handling Hazardous Materials, as well as efficient container handling for international shipments.

UPS World Ease™ – a UPS contractual service which helps you ship packages to multiple recipients within a country or the European Union (EU) as one shipment that clears customs. By consolidating multiple international shipments, you can simplify shipment processing, reduce complexities in international shipping, and reduce multiple shipment costs.

FedEx Manifest – uses the Certified FedEx Web Services for shipments originating in the U.S., to ship domestically and internationally.

USPS Manifest – enables a USPS API for shipments originating in the U.S., to ship domestically and internationally.

LTL Interface – supports shipping via Less Than Truckload (LTL) carriers and contains a data import for CzarLite rates from SMC3. Rates are obtained separately directly from SMC3.

Generic Carrier – provides the base logic to create and support development for a custom carrier manifest.

Bill of Lading/ASN – provides shipment planning, rating, and printed Bills of Lading (BOL). The Bill of Lading is also used to consolidate information for the Advanced Shipment Notice (ASN) for EDI.

Label Formatter – provides the ability to format customized labels and assign them to shipping agents, customers, or ship-to addresses.

Label Formatter Extended Features – adds the ability to do 2D barcodes and encode RFID tags.

AES – is a module that accesses the U.S. Census Bureau's free web site, AESDirect, to facilitate the electronic filing of EEI (Electronic Export Information). EEIs are required for international shipments originating in the U.S. if the commodity value is \$2,500.00 or greater.

Lanham's AES module simplifies the process for AESDirect Shipments and receives AES reference numbers (ITN numbers). The ITN numbers can then be included in shipping labels and manifests for package carriers. The AESDirect Shipment can be created manually or from the Sales Order, Purchase Order or Transfer Order form. The interface uses HTML documents. Documentation for AESDirect fields and other requirements can be found at www.aesdirect.gov.

Rate Shopping – provides the ability to estimate and quote shipping rates at the sales order or Bill of Lading level for package and LTL carriers.

Freight Invoice Reconciliation – can be used to electronically or manually compare shipping charges to freight invoices. This module comes with an import for the UPS electronic invoice format, and is typically used to reduce surcharges due to invalid shipping criteria such as addresses, accessorial charges, etc.

E-Mail – provides the ability to create customized e-mail formats and send trade related documents (invoices, order confirmations, shipment notifications, and more) to the various contacts types inside Dynamics NAV.

Software Requirements

- NAV OCX support required if utilizing MAPI e-mail interface in pre NAV 2009 environment.
- Dynamics NAV client running under Windows 2000 or newer.
- Internet connection required on all shipping stations.

Hardware Requirements

- Honeywell Granit 191X series or equivalent.
- Electronic Scales using RS232 or USB interface, Mettler Toledo P560 or similar (Check currently supported models at www.lanhamassoc.com).
- Eltron or Zebra barcode printer capable of printing at least 4" X 6" labels.
- Computer workstation: Minimum 30 MB Hard Disk, Minimum 1 GB Memory, RS232 serial or USB port for scales interface, Windows 7.0 or newer.

Related Fact Sheets

To learn more about the suite of products available from Lanham, reference the following fact sheets:

- Consumer Packaged Goods, Electronics, and Sporting Goods ACE – Advanced Commerce ERP
- Lanham EDI
- E-Receive
- Advanced Forecasting & Procurement – AFP for Distribution
- AFP for Manufacturing
- ACE Warehousing
- Outbound Warehouse Request
- Credit Card Processing
- History Management

About the Developer

Lanham Associates® provides business value to middle market distributors through best-of-breed supply chain solutions, available directly inside Microsoft Dynamics NAV.

Experts in NAV and distribution right from the start, Lanham prides itself in creating and implementing quality software that improves customers' business processes by streamlining operations, cutting costs and increasing overall productivity. Uniquely, Lanham solutions allow users to keep all of their data right at their fingertips in NAV. No tedious customizations or integrations with external sources. No new user interface to learn. Just best-of-breed solutions built to run inside your business system. It's seamless simplicity at its best, and it's reflected in all of Lanham's offerings:

ACE – Advanced Commerce ERP; AFP – Advanced Forecasting and Procurement; ACE Warehousing; Outbound Warehouse Request; Lanham EDI; E-Ship; E-Receive; Credit Card Processing; and History Management.

Lanham Associates: Seamless Simplicity for the Complex Side of Your Supply Chain.

Contact Information

Lanham Associates, Headquarters

1 Meca Way
Norcross, GA 30093 USA
Phone: +1-678-379-4200, ext 105
(From Europe: +31 (0)10 7994145)

E-Mail: LAInfo@lanhamassoc.com

Additional Resources

Lanham Services®

Available at your Reseller's request, Lanham Services can be the perfect complement to your Lanham solutions. The Lanham Services team is expert in delivering merges, implementations, support, training, custom work, EDI managed services and project work across all the Lanham supply chain solutions.

For more information on Lanham Services, contact your Lanham Reseller, or contact us directly at:

Phone: +1 678-999-3900

E-Mail: LSInfo@lanhamservices.com

Absolute Value™

Through its sister company, Absolute Value, LLC, Lanham also offers an ERP-independent forecasting and replenishment solution for distributors and manufacturers. Absolute Value is a world class, formula-based forecasting and multi-site replenishment solution designed to enable distributors to increase profits and improve customer service levels with unprecedented visibility to inventory. The product is available in a SaaS or On-Premise format and can be used with most ERP systems.

For more information on Absolute Value, contact:

Phone: 678-905-1204, ext 102

E-Mail: AVInfo@absolutevalue-us.com

Please visit: www.lanhamassoc.com or www.absolutevalue-us.com for additional product information.